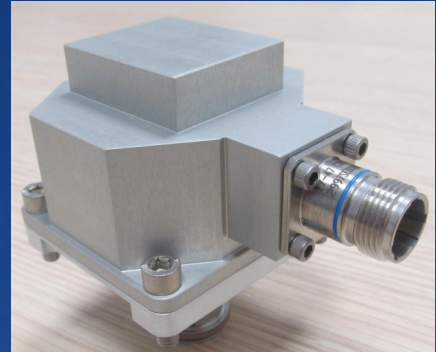
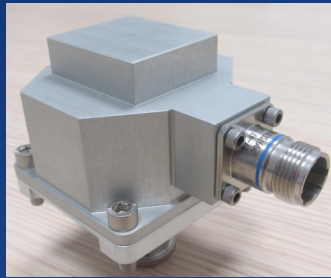
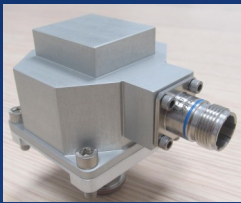




Direct Drive Valves, Bleed Valves & Torque Motors

3 easily customisable electronic free torque motors



FACT's domains of excellence

- **Aircraft & helicopter Engines**
 - APU fuel metering units
 - Actuator/ hydraulic power stage positioning valves
 - Oil metering & splitting valves
 - Bistable fuel shut off valves
 - Bleed valves
 - Butterfly valves's first stage
- **Fuel cells (hydrogen, air, oil, water regulation valves)**
- **Gaz Turbine, wind turbine, Space, optical scanning, thermal imaging systems, ...**



FACT's products : value providers for systems

FACT DDV versus jet pipe two stages servovalves (SV)

- * 50 to 70% the cost of SV
- * NPRD 2016 Reliability calculation 2 times better than SV
- * Higher Null shift stability than SV
- * Competitive chip shear force versus SV
- * Icing non sensitive
- * 0 to 350 bar system pressure range ability
- * Important range of flow
- * Low leakage
- * Usable with all gases and fluids
- * Intrinsic ability to work up to 13 000 cst

FACT DDV versus market's available (DDV MADDV)

- * 35 to 50% the cost of MADDV
- * More than 2 times better calculated reliability than MADDV
- * Harsh environment ability (vibration, high T°)
- * No electronic obsolescence management
- * Weight and space envelope reduction



FACT's products : value providers for systems

FACT DDV versus clevis style servovalve

- * Similar cost
- * Higher null shift stability
- * Chip shearing ability
- * Icing non sensitive
- * Important flow range
- * Low leakage

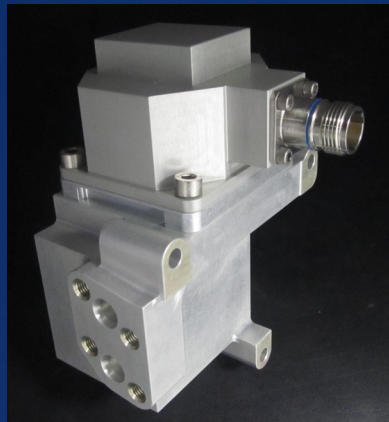
FACT DDV versus flapper nozzle servovalve

- * Similar cost
- * No tiny sections susceptible to be clogged
- * No first stage filter susceptible to be clogged
- * Higher Null shift stability
- * Higher vibration resistance
- * Important flow range
- * Low leakage
- * Higher overall dimensions and weight

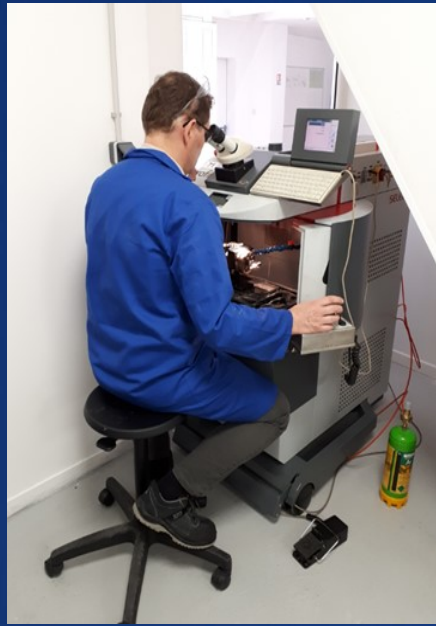


FACT's first year main achievements

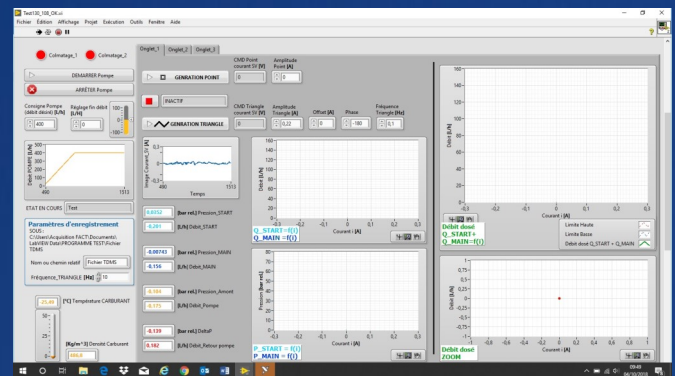
APU metering unit concept : bench validation



Prototypes assembly line in clean conditions



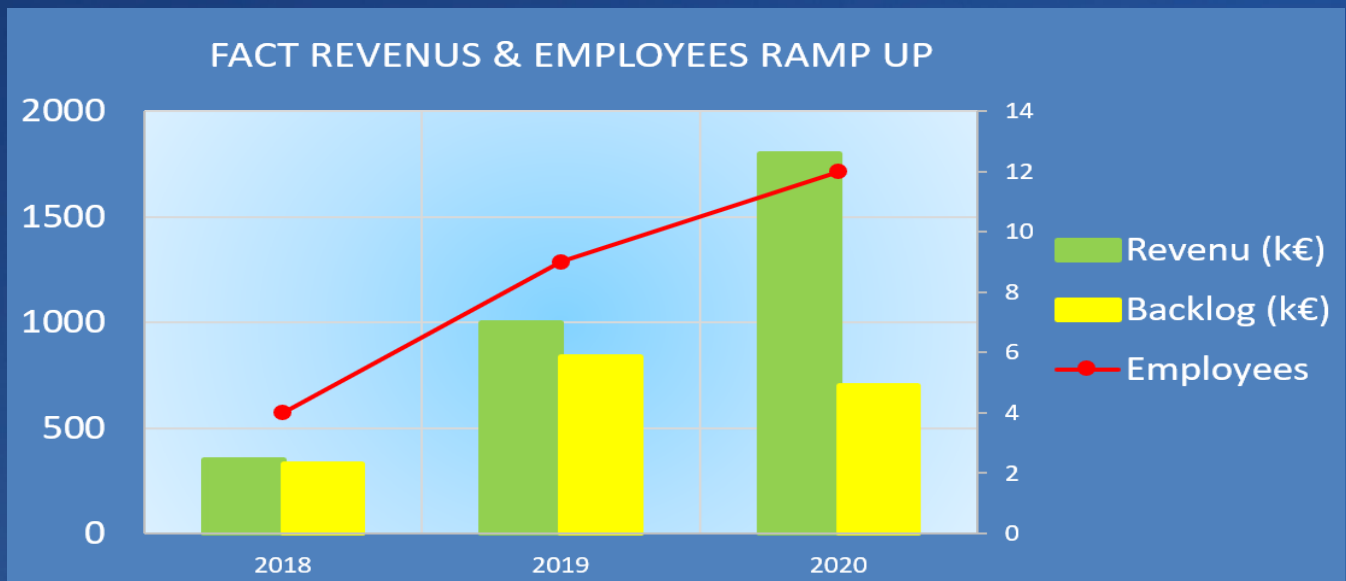
Fuel/oil ATEX test BENCH

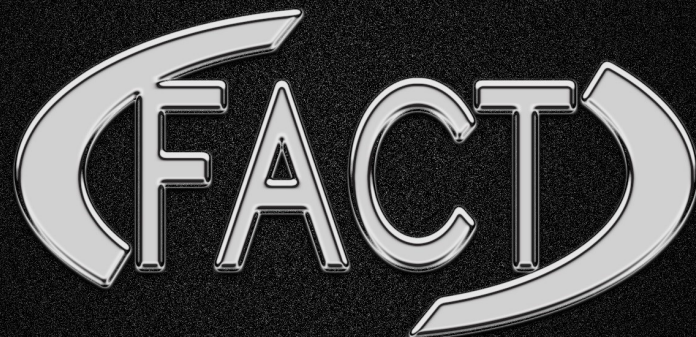


FACT 2020 ROAD MAP

- 1) HALT test products
- 2) EN9100 qualification
- 3) Built semi-automatized assembly line

FORECAST





More informations on: www.factsas.com

Contact:

guylain.ozzello@factsas.com

Fixe: +33 (0) 582 957 288

Mobile : +33 (0) 618 578 827

41 bis rue Noël Serrani – 31470 Fonsorbes – FRANCE

